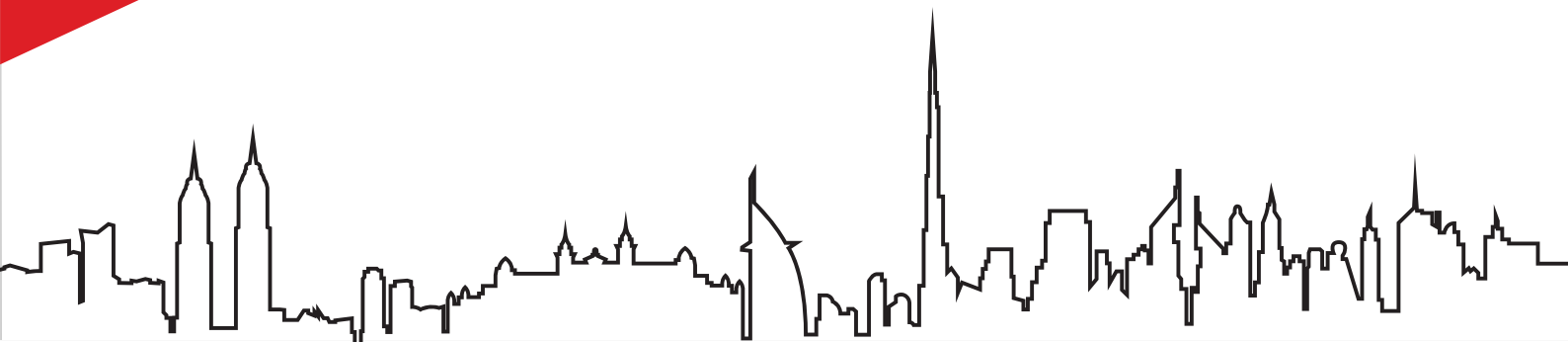




iKote **MT 40**

PRODUCT SUBMITTAL

www.innobit.me





TECHNICAL DATA SHEET

iKote MT40

HYBRID URETHANE WATERPROOFING COATING

DESCRIPTION & USE

iKote MT40 is a two component, urethane acrylate waterproofing coating. iKote MT40 formulated to provide excellent adhesion and flexibility enhanced with superior weather resistance. iKote MT40 is a monolithic, high penetrative liquid coating suitable for all types of waterproofing applications. The coating cures to form a tough and elastomeric waterproofing membrane. iKote MT40 is specially designed for providing excellent adhesion over concrete, green concrete, ceramic tiles, metal, bitumen membrane etc.

RECOMMENDED APPLICATIONS

WATERPROOFING OF

New and old roofs
New and old wet areas, fountains, and swimming pools
New and old metal roofs
Planter boxes
Existing tiled wet areas, swimming pools, fountains etc.
Retaining walls and foundations
Lift pits and buried concrete structures
Gutters, planter boxes and tanks

MAIN FEATURES

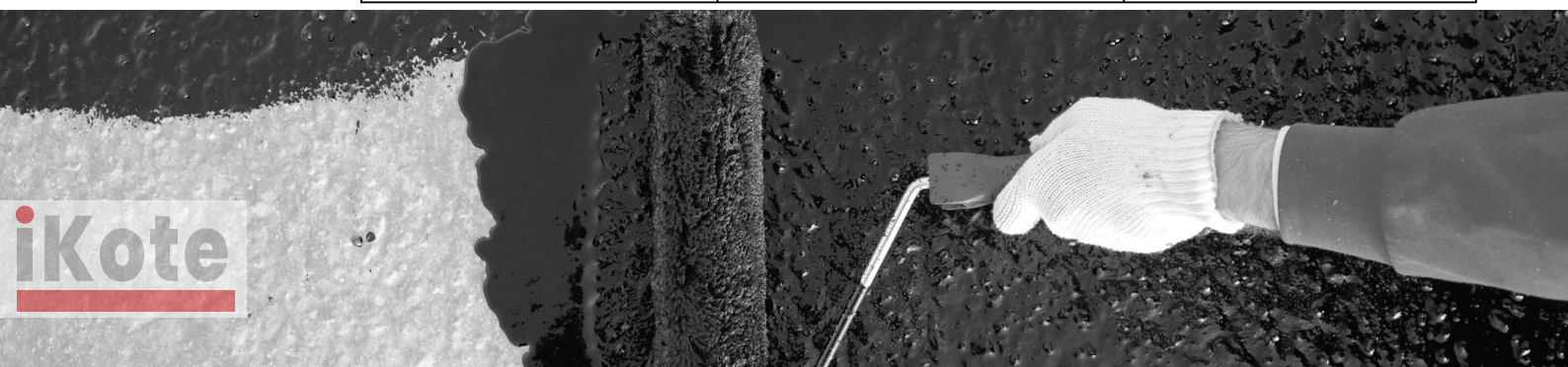
High resistance to water
Best suited for damp surfaces
Excellent adhesion to substrate
Highly durable
Environmental and application friendly
Excellent weather resistance
Low VOC
Good Flexibility

PRODUCT DETAILS

Color : White /Grey
Pot life : 60 Minutes to 90 minutes
Touch dry time : 2 hrs @ 30°C
Full Cure : 7 Days
Specific gravity : 0.70 (+/- 0.05)
Solid content : 65% (+/- 2%)
Application temperature : 5 to 40 °C (ambient)
Service temperature : -5 to 70 °C (Surface)

TECHNICAL PARAMETER

Physical Properties	Test Method	Typical Value
Tensile strength #	ASTM D 412	>1 N/mm ²
Elongation #	ASTM D 412	> 110 %
SRI (white color)	ASTM C 1549	>80
Solar reflectance	ASTM E 1549	>77
Emissivity	ASTM C 1371	<1
Water Vapor transmission (perms)	ASTM E 96	5
Adhesion	ASTM D 4541-17	>2 MPa
Crack bridging	ASTM C 836	Up to 1 mm



SUBSTRATE PREPARATION	The surface must be clean and structurally sound. Any loose surface should be chipped off and repaired. Sharp edges and protrusions should be levelled off to ensure uniform thickness build up. Use industrial grade detergent or degreasing compounds for removing oil or grease and wax contaminants. Cement laitance, mold release agents, curing membranes and other contaminants must be removed from the surface by grinding or scarifying followed by vacuum cleaning. While applying iKote MT40 over aluminum sandwich panel or corrugated sheets, make sure that all the joints are riveted properly, and rusted sheets replaced.
MIXING	iKote MT40 is a two-component product. Contents of Part A should be mixed for a minute. Whilst mixing Part A, add PART B gradually to PART A and mix thoroughly for 3 minutes to get a uniform consistency. It is recommended to use a slow speed double shaft mixer.
APPLICATION INSTRUCTION	Application procedure may vary slightly depending upon the site conditions. The general recommended guidelines for the application of the coating systems is as follows: It is recommended to apply iKote MT40 in three coats with fibre mesh or geo textile reinforcement. Critical areas like pipe penetrations and corners to be treated first. Apply one coat of iKote MT40 with a brush on all corners and around the pipe penetrations extending up to 200mm on either sides and reinforce with a fibre mesh/ geo textile. Apply a second coat over it and allow to dry. Then apply first coat of iKote MT40 by brush or roller over the entire area at 0.75 Ltr/ Sq.M and embed reinforcement mesh. A second coat to be applied at right angles to the first coat at 0.75 Ltr/ Sq.M. after the first coat is completely dry.
COVERAGE	1.5 Ltr/M2
RECOMMENDED THICKNESS	For Wet areas – primer coat and 2 coat application at 0.75 Ltrs / sq mtr per coating For damp proofing – Primer coat and 1 coat application at 0.75 Ltrs / Sq mtr per coating For Areas with constant hydrostatic pressure – Pls refer to our detailed method statement of application
CLEANING	Tools can be cleaned with water while the iKote MT40 is still fresh. When hardened, it can only be removed by mechanical means.
PACKAGING	20 Ltr pails (19 Ltr Part A , 1 Ltr Part B)
STORAGE	Store all materials in a covered, cool and dry place. Avoid material allowing the material to freeze which will render the material unusable. If stored properly, iKote MT40 has a shelf life of at least 12 months.
LIMITATIONS	ikote MT40 should not be applied if the air temperature, substrate temperature or material temperature is greater than 45°C. This may significantly reduce the open time of coating, Do not proceed with application on external areas when rainfall is imminent . Do not apply over light weight concrete or foam concrete.
HEALTH AND SAFETY	Caution should be exercised while applying the product as it is with any other construction chemical. Impervious gloves and barrier cream should be used when handling these products. Eye protection should be worn. If accidental eye contamination occurs, wash thoroughly with plenty of water and seek medical advice. If contact with skin occurs, it must be removed before curing takes place.

Disclaimer: All technical data at this Product Data Sheet are based on laboratory tests. Actual measured data may vary due to circumstances beyond our control. Please note that as a result of specific local regulations the performance of this product may vary from country to country. Please consult the local Product Data Sheet for the exact description of the application fields. Information on this datasheet is subject to change without notice and should not be used for writing specification. For additional information on specific applications, please contact Greentech. The information contained herein, particularly recommendations for the handling and use of our products, is based on our professional experience. As materials and conditions may vary with each intended application, and thus are beyond our sphere of influence, we strongly recommend that in each case sufficient tests are conducted to check the suitability of our products for their intended use. Legal liability cannot be accepted on the basis of the contents of this data sheet, or any verbal advice given, unless there is a case of willful misconduct or gross negligence on our part. This technical data sheet supersedes all previous editions relevant to this product. Innobit reserves the right to change the properties of its products. The proprietary rights of third parties must be observed. All orders are accepted subject to our current terms of sale and delivery. Users must always refer to the most recent issue of the local Product Data Sheet for the product concerned copies of which will be supplied on request. All values given are subject to 5 – 10% tolerance. #Values achieved within 48 hours after casting specimen.



GREENTECH THERMAL INSULATION PRODUCTS MANUFACTURING L.L.C
 Head Office :D- 805, Aspect Tower, Happiness Street, Business Bay, Dubai, UAE
 Factory : Umm Al Thoub, New Industrial Area, PO No:3343 Umm Al-Quwain, UAE



GLOBAL BUSINESS SOLUTION
 Room no: 311, Nawabpur Tower,
 198-202 Nawabpur Road, Dhaka-1100 Bangladesh.
 Phone : +880 257164405+88 01916 82 21 06
 Web : www.globalbusinessbd.com





TEST REPORTS



TEST REPORT ON TENSILE STRENGTH & ELONGATION

Customer Name	Greentech Thermal Insulation Producta MFG LLC, Umm A Quwain, UAE		
Address	Innobit	Lab Report No.	WD-R-220416-0439
Sample Description	IKOTE MT 40	Sample No.	WD-S-220416-0408
Source	Greentech Thermal Insulations MFG LLC	Request No.	WD-Q-220416-0142
Client's Ref.	N.G	Date Received	16/04/2022
Sampling Method	ASTM D412-16	Casting Date	N.G
Test Method	ASTM D412-16	Curing Time	N.G
Specimen Type	Test Method A – Die C.	Date Tested	16/04/2022
Conditioning Procedure	23°C 50%	Date Reported	20/04/2022
Speed of Testing	500 mm/minute	Sample brought in by	Client
Wimpey Ref No.	220416-02/4	Tested By	PK

Test Result

Specimen Number	Width (mm)	Thickness (mm)	Maximum Force (N)	Tensile Strength (N/mm ²)	Elongation (%)
1	6.0	2.50	11.9	0.79	113
2	6.0	2.20	12.1	0.91	114
3	6.0	2.20	11.7	0.88	109
4	6.0	2.50	11.8	0.78	104
5	6.0	2.50	12.2	0.81	114
Average				0.83	111

Remarks: None.

Signed for and on behalf of Wimpey Laboratories LLC,

S. Sarath Kumar
Head of Department

Test results relate only to the samples tested

This report shall not be reproduced except in full, without the written approval of the laboratory.

-End of text-





TEST REPORT ON CRACK BRIDGING ABILITY

Customer Name	Greentech Thermal Insulations MFG LLC, P.O.Box: 3350, Umm Al Quwain, UAE		
Address	Innobit	Lab Report No.	WD-R-220416-0439/1
Sample Description	IKOTE MT 40	Sample No.	WD-S-220416-0408
Source	Greentech Thermal Insulations MFG LLC	Request No.	WD-Q-220416-0142
Test Method	BS EN 1062-7:2004	Wimpey Ref. No.	220416-02/4
Sample Preparation Standard	BS EN 1766:2017	Date Received	16/04/2022
Nature of Substrate	Concrete	Casting Date	30/04/2022
Substrate Dimension(mm)	75 L x 50 W	Date Tested	07/05/2022
Test Method	Method A	Date Reported	10/05/2022
Sampling Conditioning	Temperature: 23°C Relative Humidity: 50%	No. of coat & Method of application	2 coat with Brush
Test Condition	Temperature: 23°C Relative Humidity: 50%	Sample brought in by	Wimpey Lab
Dry Film Thickness	100 microns	Tested By	AV

Test Results

Test	Crack width at which first failure in the coating occurred (mm)	Class as per EN 1062-1:2004
Crack Bridging Ability	3.04	Class A ₅

Class for Crack Bridging test as per EN 1062-1:2004, Table 6

Class	Crack width (microns)
A ₀	No requirement
A ₁	>100
A ₂	>250
A ₃	>500
A ₄	>1250
A ₅	>2500

Remarks: None.

Signed for and on behalf of Wimpey Laboratories

S. Sarath Kumar
Head of Department

Test results relate only to the samples tested

This report shall not be reproduced except in full, without the written approval of the laboratory

-End of text-





METHOD STATEMENT

METHOD STATEMENT

iKote MT40



WATERPROOFING SOLUTIONS



GREENTECH THERMAL INSULATION PRODUCTS MANUFACTURING L.L.C

Head Office :D- 805, Aspect Tower, Happiness Street, Business Bay, Dubai, UAE

Factory : Umm Al Thoub, New Industrial Area, PO No:3343 Umm Al-Quwain, UAE



GLOBAL BUSINESS SOLUTION

Room no: 311, Nawabpur Tower,
198-202 Nawabpur Road, Dhaka-1100 Bangladesh.

Phone : +880 257164405+88 01916 82 21 06

Web : www.globalbusinessbd.com



Method Statement	
iKote MT40 - Liquid applied waterproofing	Doc ref: MS MT40 01

Scope:

Method statement for the application of the proposed liquid-applied waterproofing system.

Application Areas:

- New and Old Roofs
- New and Old Wet Areas
- Corrugated Metal Roofs
- New and Old Swimming pools
- Existing tiled wet areas
- Existing Terrazzo tiles roofs
- New and old balconies

TABLE OF CONTENT

Description	
1.	General Information
2.	Job Conditions
3.	System Description
4.	Substrate Preparations
5.	Application of the proposed product
6.	Tool care and General information
7.	Drawing



Method Statement	
iKote MT40 - Liquid applied waterproofing	Doc ref: MS MT40 01

1. GENERAL INFORMATION

SAFETY FIRST

Ensure sufficient ventilation during application. Wear Protective Clothing, Gloves and Chemical Splash Goggles. Also wear Safety Shoes, Overalls, Hardhats, and safety Harnesses. Coordinate protective measures with the Owner or his designated Representative. Remember, these products are to be handled, used, and applied only by professionals.

NOTE: Copies of all current MSDS for all components must be kept on site.

Do not use open flames to accelerate the drying/curing of any products described herein. As with all chemicals, use caution and good industrial hygiene when handling and disposing of empty containers. Never leave empty or half full containers on site as these can be dangerous and accidents might happen. Never discharge rest of the materials directly into any open body of water. If in doubt, always contact the local authorities prior to discharging to the soil surface. Refer to the Product Data Sheets (TDS) and the Material Safety Data Sheets (MSDS) for additional information.

MATERIAL STORAGE

All components will be delivered to the site in original sealed containers/ packaging. Define a storage area for all components that is cool, dry, out of direct sunlight, and in accordance with recommendations of Innobit.

2. JOB CONDITIONS

Install coating materials where all the following conditions are met:

- Concrete/ tiles / metals Corrugated sheet surface has not been treated with any substance which will adversely affect adhesion or performance.
- Open fires and spark producing equipment are not, and will not be, in proximity to the application area until vapors have dissipated.

Post 'No Smoking' signs in the surrounding area during and for at least 8 hours following the application period. Strictly adhere to special requirements of Manufacturer as modified by applicable rules and regulations of local, state and federal authorities having jurisdiction.

APPLICATION SUPERVISOR

The products/systems Applicator or Applicator Supervisor must be licensed or trained by Innobit and must have minimum of 2 years' experience in application of liquid-applied waterproofing membranes/coatings.

TOOLS & EQUIPMENT NEEDED

Following is a list of power and/or hand tools and equipment that are typically needed to apply iKote MT40



Method Statement

iKote MT40 - Liquid applied waterproofing

Doc ref: MS MT40 01

- Protective clothing, gloves, chemical splash goggles, safety shoes and hardhats.
- Ladders and safety equipment (safety harnesses, warning flags/lines, tie-offs, etc.)
- Stiff bristle broom and scrub brush (eg: wire brush).
- Solvent Stable Rollers mohair rollers with short / medium hair.
- Solvent Stable brushes with short / medium hair.
- Double shaft mixer or heavy-duty drill and paddle to mix coatings prior to application.
- Masking tapes of 3cm width minimum.
- A pair of scissors to cut the iMat 45 into the adequate pieces.
- Electrical extension cords.
- Garbage bags.

3. PROPOSED SYSTEM & PRODUCTS DESCRIPTION.

Following are the products proposed: -

FIRST COAT WATERPROOFING	ikote MT40	Liquid applied waterproofing.
EMBEDED MESH	iMat 45	45 gsm fibremesh
SECOND COAT WATERPROOFING	ikote MT40	Liquid applied waterproofing.
FINAL COAT WATERPROOFING	ikote MT40	Liquid applied waterproofing.

CHECK LIST PRIOR TO APPLICATION

- Specifications and drawings have been read, understood, and are available for review.
- All certifications or approvals have been received for decking and roofing materials where applicable.
- Material supplier's literature and application specifications are available for information and review.
- Safety precautions and MSDS have been reviewed and are on site during application.
- Amount and type of materials required by specifications (and verified by on-site inspection of product labels) are at job site and are visually suitable for application.
- Materials are stored appropriately (i.e., covered if required, off ground, and on pallets)
- Equipment is in good working order and functioning properly (i.e., mixers, spreaders, etc.)

4. SUBSTRATE PREPARATION

Concrete

Existing or new concrete surface shall be free of oil, grease, curing compounds, loose particles, moss, algae growth, laitance, friable matter, dirt. Loose tiles should be removed. The substrate shall be sound and all spalls, voids, and blow holes on vertical or horizontal surfaces must be repaired prior to placement of the first coat. Areas of minor surface deterioration of 3 mm or greater in depth shall be repaired with cementitious mortar to prevent possible ponding of the system, leading to excessive usage of coating.



Method Statement	
iKote MT40 - Liquid applied waterproofing	Doc ref: MS MT40 01

Existing tiled Substrate

Existing tiled surface shall be free of oil, grease, curing compounds, loose particles, moss, algae growth, laitance, friable matter, dirt. Loose tiles should be removed. The substrate shall be sound and all spalls, voids, and blow holes on vertical or horizontal surfaces must be repaired prior to placement of the first coat.

Corrugated Metal Sheet

New or existing corrugated sheets shall be free of oil, grease, curing compounds, loose particles, moss, algae growth, laitance, friable matter, dirt. Where required, surface shall be abrasively cleaned in accordance with ASTM D4259 to provide a sound substrate free from laitance. make sure that all the joints are riveted properly, and rusted sheets replaced.

5. APPLICATION OF THE PROPOSED LIQUID APPLIED WATERPROOFING

Mixing

iKote MT40 is a two-component product. Contents of Part A should be mixed for a minute. Whilst mixing Part A, add PART B gradually to PART A and mix thoroughly for 3 minutes to get a uniform consistency. It is recommended to use a slow speed double shaft mixer.

It is recommended to do treat all vertical abutments prior to waterproofing of main areas. Before the application of any component of the system, the substrate shall be dry, with any remaining dust or loose particles removed using clean, dry, oil-free compressed air, industrial vacuum, cloth-wipe, or a combination.

Application

Step 1. Critical areas like pipe penetration and corners should be treated first.

Step 2. Apply one coat of iKote MT40 by a brush on all corners and around the pipe penetrations, extending up to 200mm on either sides and carefully insert a fibre mesh/geotextile reinforcement into it.

Step 3. Apply a second coat over it and allow to dry.

Step 4. Then apply first coat of iKote iKote MT40 by brush or roller over the entire area @ 0.75 Ltr /sqm.

Step 5. Step 3: Roll out the ikote 45 Mesh directly into the coating, avoiding any folds and wrinkles. Use a medium nap roller or brush to work the coating into the mesh/ geotextile. saturating from the bottom up.

Step 5. A second coat is to be applied at right angles to the first coat @ 0.75 ltr /m2 after the first coat is dry. At all iMat 45 seams, allow a 5 cm overlap for all side joints and a 10 cm overlap for all end joints.

Step 6. Apply final coat of ikote MT40 over the entire area and ensure iKote MT40 is evenly spread over the entire substrate.



Method Statement	
iKote MT40 - Liquid applied waterproofing	Doc ref: MS MT40 01

Allow 72 hours to dry before flood test or installation of tiles.

6. TOOL CARE & GENERAL INFORMATION

Brushes and rollers will remain usable if they are kept moving in liquid coating. If allowed to sit, they will harden quickly as coating begins to cure. Rollers must be discarded once they stiffen. Brushes may be discarded or cleaned with water. Roller handles can also be cleaned with water. If solvent is used, the tool must air dry for twenty-four (24) hours before being reused for mixing and/or application.

Clean-up and disposal

Remove all masking, protection, equipment, materials, and debris from the work and storage areas and leave those areas in an undamaged and acceptable condition. Cured iKote MT40 coatings may be disposed of in standard landfills.

Spillages

Spillages of any liquid should be wiped up or absorbed and removed as soon as possible. Not only is this a responsible action as far as Health and Safety is concerned, it will also help you to keep your deck in good condition. Once the spillage is removed the area should be cleaned as usual with your standard floor cleaner.

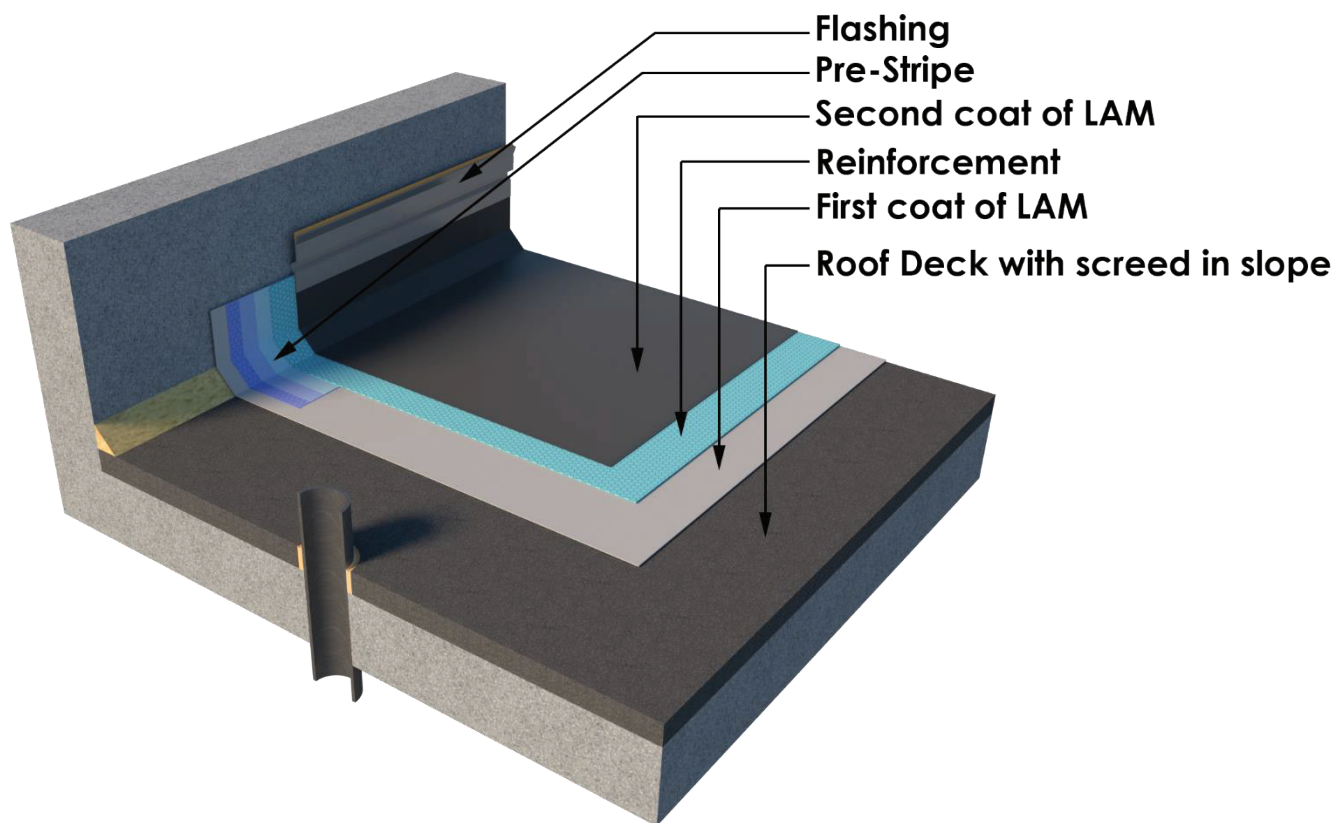
Additional Recommendation

Read the Products Technical Data Sheets (TDS) carefully. Should any additional information is required; please call Toll Free Number 800[LEAK] and ask for technical assistance.



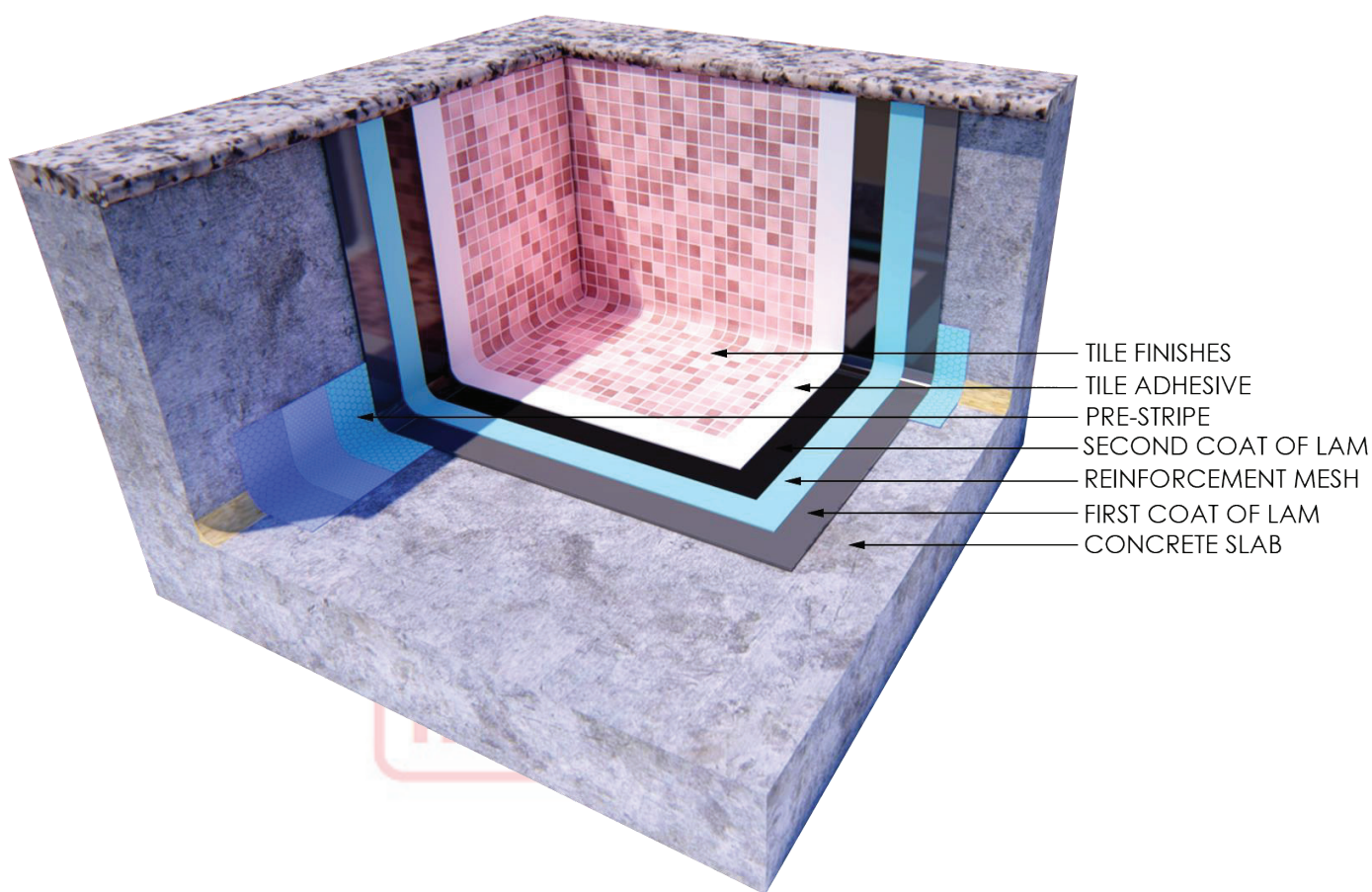
Method Statement	
iKote MT40 - Liquid applied waterproofing	Doc ref: MS MT40 01

Drawing -Flat Roofs



Method Statement	
iKote MT40 - Liquid applied waterproofing	Doc ref: MS MT40 01

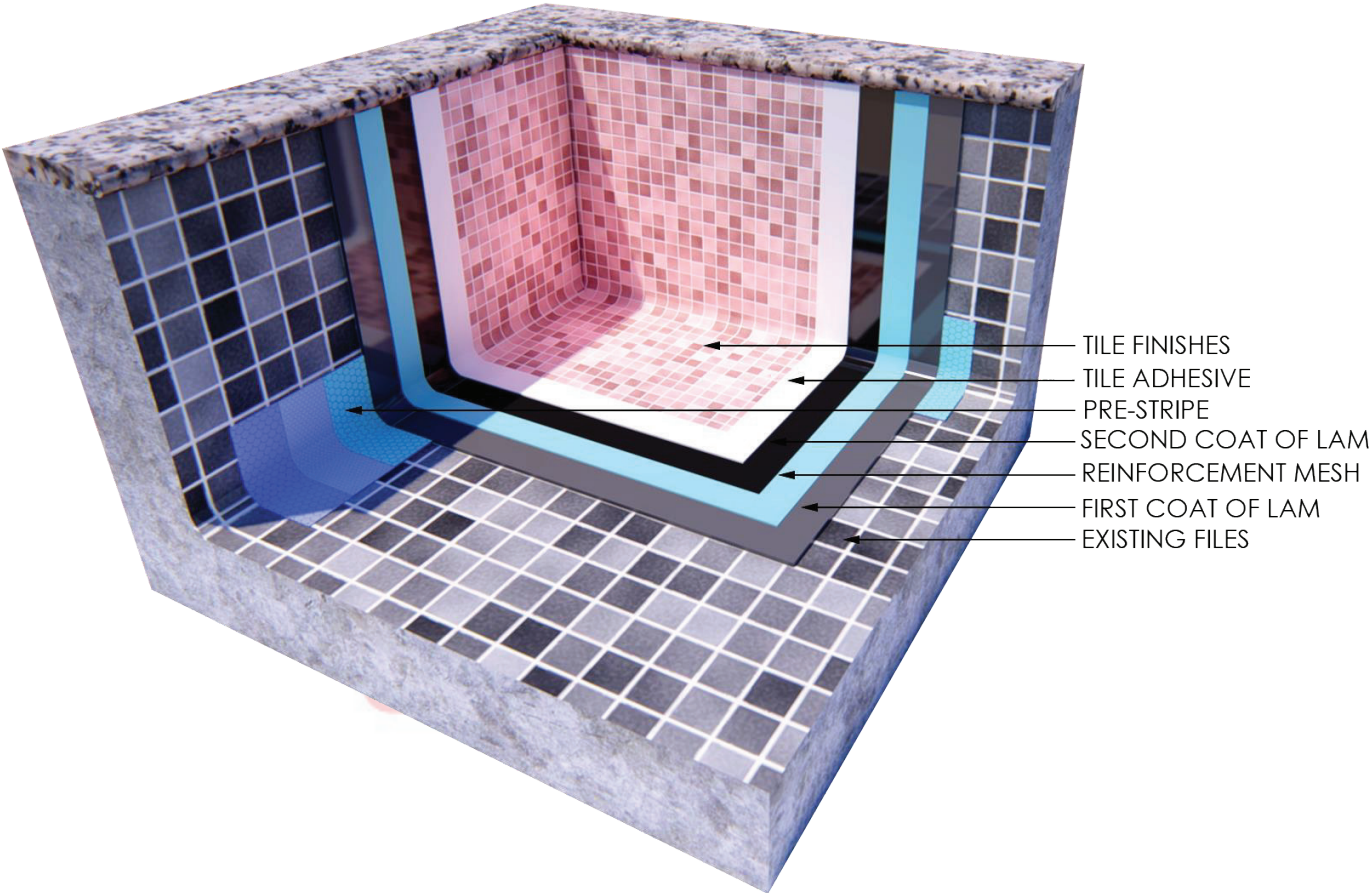
Drawing – Swimming Pool



Method Statement

iKote MT40 - Liquid applied waterproofing Doc ref: MS MT40 01

Drawing – Existing Tiled Swimming Pool

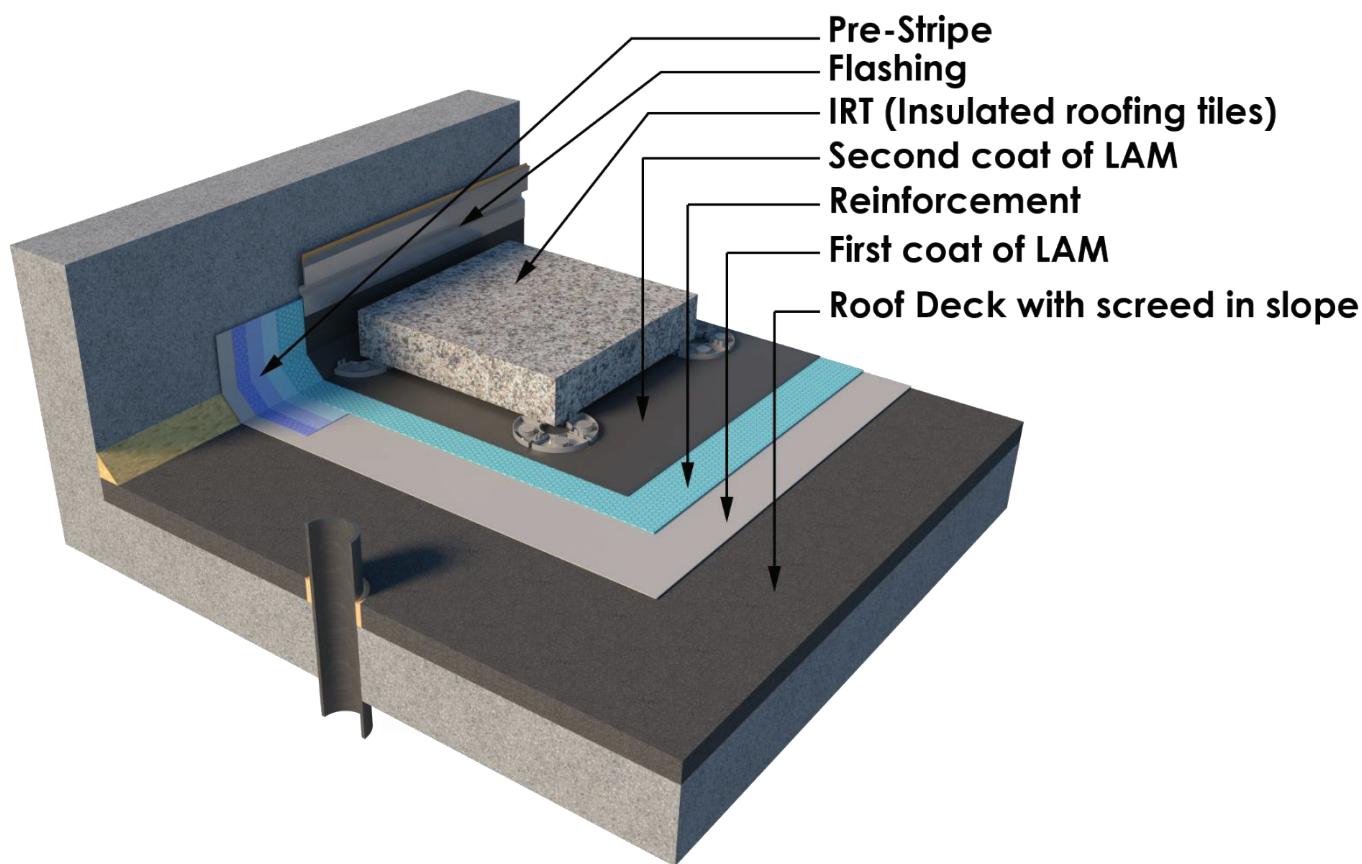


Method Statement

iKote MT40 - Liquid applied waterproofing

Doc ref: MS MT40 01

Drawing –Flat Roof with Insulated Roofing Tile

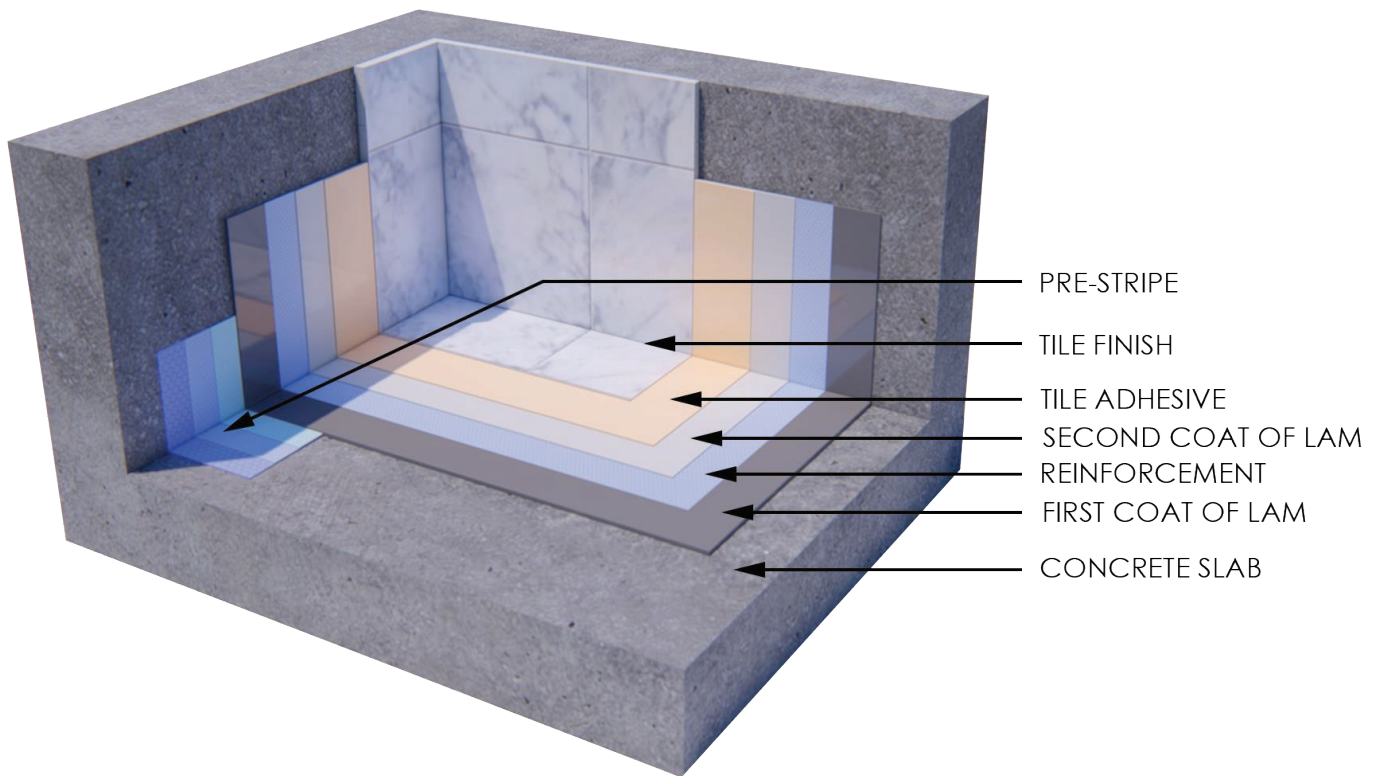


Method Statement

iKote MT40 - Liquid applied waterproofing

Doc ref: MS MT40 01

Drawing -Wet Areas

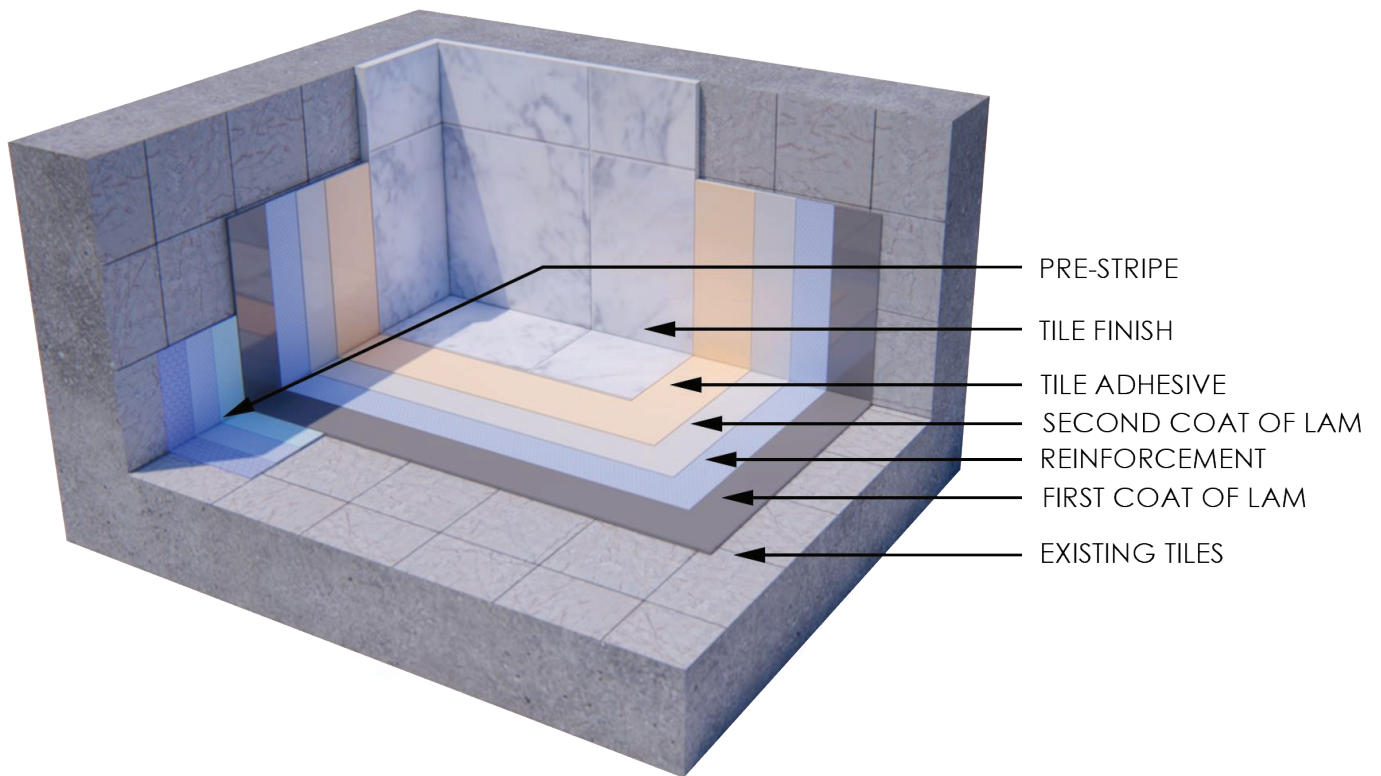


Method Statement

iKote MT40 - Liquid applied waterproofing

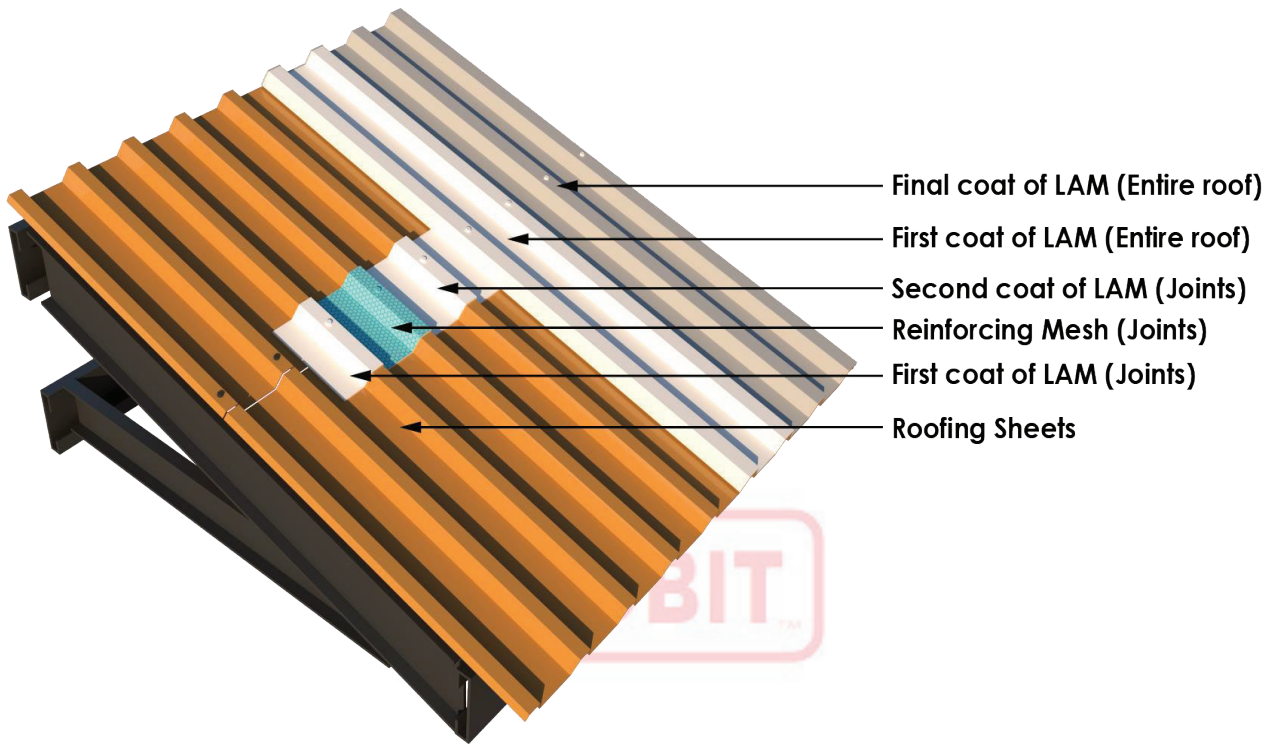
Doc ref: MS MT40 01

Drawing – Existing Tiled Wet Areas



Method Statement	
iKote MT40 - Liquid applied waterproofing	Doc ref: MS MT40 01

Drawing : Corrugated metal roof sheet





QUALITY CERTIFICATION

CERTIFICATE OF REGISTRATION

This is to certify that the management system of:

Greentech Thermal Insulation Products Manufacturing LLC – First Branch

Main Site: Plot No:0281 & 2212, Area No.01, PO Box :3343, Umm Al
Thaob, New Industrial Area, Umm Al Quwain, United Arab Emirates
has been registered by Intertek as conforming to the requirements of:

ISO 9001:2015

The management system is applicable to:

Development, Manufacturing and Supply of Waterproofing Products.

Certificate Number:
0123318
Initial Certification Date:
07 April 2022
Date of Certification Decision:
07 April 2022
Issuing Date:
07 April 2022
Valid Until:
06 April 2025



Calin Moldovean
President, Business Assurance

Intertek Certification Limited, 10A Victory Park,
Victory Road, Derby DE24 8ZF, United Kingdom

Intertek Certification Limited is a UKAS
accredited body under schedule of
accreditation no. 014.



CERTIFICATE OF REGISTRATION

This is to certify that the management system of:

Greentech Thermal Insulation Products Manufacturing LLC – First Branch

Main Site: Plot No:0281 & 2212, Area No.01, PO Box :3343, Umm Al
Thaob, New Industrial Area, Umm Al Quwain, United Arab Emirates
has been registered by Intertek as conforming to the requirements of:

ISO 14001:2015

The management system is applicable to:

Development, Manufacturing and Supply of Waterproofing Products.

Certificate Number:
0123319

Initial Certification Date:
07 April 2022

Date of Certification Decision:
07 April 2022

Issuing Date:
07 April 2022

Valid Until:
06 April 2025



intertek

Calin Moldovean
President, Business Assurance

Intertek Certification Limited, 10A Victory Park,
Victory Road, Derby DE24 8ZF, United Kingdom

Intertek Certification Limited is a UKAS
accredited body under schedule of
accreditation no. 014.



CERTIFICATE OF REGISTRATION

This is to certify that the management system of:

Greentech Thermal Insulation Products Manufacturing LLC – First Branch

Main Site: Plot No:0281 & 2212, Area No.01, PO Box :3343, Umm Al
Thaob, New Industrial Area, Umm Al Quwain, United Arab Emirates
has been registered by Intertek as conforming to the requirements of:

ISO 45001:2018

The management system is applicable to:

Development, Manufacturing and Supply of Waterproofing Products.

Certificate Number:
0123320

Initial Certification Date:
07 April 2022

Date of Certification Decision:
07 April 2022

Issuing Date:
07 April 2022

Valid Until:
06 April 2025



Calin Moldovean
President, Business Assurance

Intertek Certification Limited, 10A Victory Park,
Victory Road, Derby DE24 8ZF, United Kingdom

Intertek Certification Limited is a UKAS
accredited body under schedule of
accreditation no. 014.





MATERIAL SAFETY DATA SHEET

SAFETY DATA SHEET

Ref : SDS-ikMT Version -2 Dated 21.01.2022



iKote MT 40

Section: 1 - Identification

Product Name	iKote MT 40
Recommended use	Hybrid Acrylate Waterproofing Coating
Manufacturer	Greentech Thermal Insulation Product Manufacturing L.L.C P.O. Box:3350,Umm Al Quwain,UAE
Telephone	Tel : 800 LEAK (5325) / + 9714 435 7340
Website	www.innobit.me

Section: 2 - Hazards Identification

Hazard Classification

Classification of the product

No need for classification according to GHS criteria for this product.

Label elements

The product does not require a hazard warning label in accordance with GHS criteria.

Section: 3 - Composition/information on Ingredients

Ingredient Name	CAS No #	% Wt
Mixture of: 5-chloro-2-methyl-2H-isothiazol-3-one and 2-methyl-2H-isothiazol-3-one (3:1)	55965-84-9	0.0 - < 55.0PPM
Water	7732-18-5	20- 30%
Mineral Fillers		40- 50%

Section: 4 - First Aid Measures

Inhalation	If fumes or combustion products are inhaled, <ul style="list-style-type: none">Remove from contaminated area to fresh airAssist in breathing if necessaryImmediate medical attention required
Ingestion	Immediately rinse mouth and then drink plenty of water, do not induce vomiting, seek medical attention. Never induce vomiting or give anything by mouth if the victim is unconscious or having convulsions.
Skin Contact	Wash affected areas thoroughly with soap and water. If irritation develops, seek medical attention.
Eye Contact	Flush with copious amounts of water for at least 15 minutes. If irritation develops, seek medical attention.
General Advice	Remove contaminated coating

Indication of any immediate medical attention and special treatment needed

Note to physician Treatment: Symptomatic treatment (decontamination, vital functions).

Section: 5 - Fire Fighting Measures

5.1. Extinguishing media

Suitable extinguishing media: water spray, foam ,dry powder

5.2. Special hazards arising from the substance or mixture

Hazards caused by exposure in the event of fire : No particular hazards known

5.3. Advice for firefighters

Protective equipment for fire-fighting:

Firefighters should be equipped with self-contained breathing apparatus and turn-out gear.



GREENTECH THERMAL INSULATION PRODUCTS MANUFACTURING L.L.C
Head Office :D- 805, Aspect Tower, Happiness Street, Business Bay, Dubai, UAE
Factory : Umm Al Thoub, New Industrial Area, PO No:3343 Umm Al-Quwain, UAE

GLOBAL BUSINESS SOLUTION
Room no: 311, Nawabpur Tower,
198-202 Nawabpur Road, Dhaka-1100 Bangladesh.
Phone : +880 257164405+88 01916 82 21 06
Web : www.globalbusinessbd.com



SAFETY DATA SHEET

Ref : SDS-ikMT Version -2 Dated 21.01.2022



Further information:

Dispose of fire debris and contaminated extinguishing water in accordance with official regulations. Product itself is non-combustible; fire extinguishing method of surrounding areas must be considered.

Section: 6 - Accidental Release Measures

6.1. Personal precautions, protective equipment and emergency procedures

Use personal protective clothing. Avoid contact with skin and eyes.

6.2. Environmental precautions

Do not release untreated into natural waters.

6.3. Methods and material for containment and cleaning up

For small amounts: Pick up with suitable absorbent material (e.g. sand, sawdust, general-purpose binder, kieselguhr). Dispose of absorbed material in accordance with regulations.

For large amounts: Pump off product.

Spills should be contained, solidified, and placed in suitable containers for disposal.

Section: 7 - Handling and storage

7.1. Precautions for safe handling.

Handle in accordance with good industrial hygiene and safety practice. No special measures necessary provided product is used correctly. Ensure adequate ventilation.

7.2. Conditions for safe storage, including any incompatibilities.

Further information on storage conditions: Store protected against freezing.

Protect from temperatures below: 5 °C

The packed product is destroyed at low temperatures or by frost.

Protect from temperatures above: 60 °C

The packed product must be protected against exceeding the indicated temperature.

Section: 8 - Exposure controls / Personal Protection

No occupational exposure limits known.

Advice on system design: Ensure adequate ventilation.

General safety and hygiene measures:

Hands and/or face should be washed before breaks and at the end of the shift. Avoid contact with skin and eyes.

Personal Protective Equipment (PPE)

Respiratory Protection	Wear respiratory protection if ventilation is inadequate.
Hand Protection	Chemical resistant protective gloves
Eye Protection	Tightly fitting safety goggles (chemical goggles). Wear face shield if splashing hazard exists

Section: 9 - Physical and chemical properties

Form	Liquid
Odor	Faint odor
Color	White
pH	

Section: 10 - Stability and Reactivity

Reactivity	No hazardous reactions if stored and handled as prescribed/indicated. Corrosion to metals: Corrosive effects to metal are not anticipated. Oxidizing properties: not fire-propagating
Chemical stability	The product is stable if stored and handled as



GREENTECH THERMAL INSULATION PRODUCTS MANUFACTURING L.L.C

Head Office :D- 805, Aspect Tower, Happiness Street, Business Bay, Dubai, UAE

Factory : Umm Al Thoub, New Industrial Area, PO No:3343 Umm Al-Quwain, UAE

GLOBAL BUSINESS SOLUTION

Room no: 311, Nawabpur Tower,
198-202 Nawabpur Road, Dhaka-1100 Bangladesh.

Phone : +880 257164405+88 01916 82 21 06

Web : www.globalbusinessbd.com



SAFETY DATA SHEET

Ref : SDS-ikMT Version -2 Dated 21.01.2022



	prescribed/indicated.
Possibility of hazardous reactions	No hazardous reactions when stored and handled according to instructions. After long storage, slight quantities of carbon monoxide may be formed. The product is chemically stable.
Conditions to avoid	Avoid Extreme Heat.
Incompatible materials	Salt
Hazardous decomposition products	carbon dioxide, carbon monoxide, hydrocarbons

Section:11 - Toxicological Information

No adverse health effects are expected if handled as recommended with suitable precautions for designated uses. The statement was derived from products of similar composition.

Section:12 - Ecological Information

Do not release untreated into natural waters. At the present state of knowledge, no negative ecological effects are expected.

Section:13 - Disposal Considerations

Waste disposal of substance:

Incinerate or dispose of in a licensed facility. Do not discharge into drains/surface waters/groundwater.

Container disposal:

Dispose of in a licensed facility. Recommend crushing, puncturing or other means to prevent unauthorized use of used containers.

Section:14 – Transport Information

Products are not classified as dangerous goods under any transport legislation.

Section:15 – Regulatory Information

Safe Drinking Water & Toxic Enforcement Act, CA Prop. 65:

WARNING: This product can expose you to chemicals including ETHYLENE OXIDE, which is known to the State of California to cause cancer and birth defects or other reproductive harm. For more information, go to www.P65Warnings.ca.gov.

NFPA Hazard codes:

Health: 1 Fire: 0 Reactivity: 0 Special:

Section:16 – Other Information

The information provided in this safety datasheet is correct to the best of our knowledge, information and belief at the date of its publication. Users of iKote MT 40 should familiarize themselves with storage, handling and application to ensure all safety requirements are observed. For further material and safety information please contact INNOBIT.



Waterproofing
Redefined.



GREENTECH THERMAL INSULATION PRODUCTS MANUFACTURING L.L.C

 OFFICE : D-805, Aspect Tower, Happiness Street, Business Bay, Dubai, UAE

 FACTORY : Umm Al Thoub, New Industrial Area, PO No:3343 Umm Al-Quwain, UAE

 www.innokit.me  Info@innokit.me



BANGLADESH AGENT

GLOBAL BUSINESS SOLUTION
Room no: 311, Nawabpur Tower 198-202
Nawabpur Road, Dhaka-1100 Bangladesh.
Phone : +880 257164405+88 01916 82 21 06
Web : www.globalbusinessbd.com